

Upscaling of Community Nutrition Gardens in Madhya Pradesh



GIZ Securing Nutrition, Enhancing Resilience (SENU) project



424,000

women of child-bearing age, pregnant and lactating women



86,000

young children (6-23 months)

From vulnerable communities in the states of Madhya Pradesh and Maharashtra, India (2015-2025). SENU follows a multi-sectoral approach linking nutrition education, community / homestead nutrition gardens and nutrition governance

Community Nutrition Garden approach



Objective

Promote year-round availability of diverse and nutritious food for household consumption, women and economic empowerment of food insecure women and their families.

Promote CNGs as nutrition field schools, promote knowledge exchange

Increase dietary diversity as the core of the approach, surplus produce can be sold on markets

Prospects under CNG

- 3 model CNGs per block of sizes 1 and 2 hectares
- Expected to cover approximately 1250 hectares across Madhya Pradesh
- 50-80 person days in addition to the 100 guaranteed days of employment
- Livelihood opportunities such as fisheries, apiculture, vegetable production, NADEP and vermicompost etc.
- Touching around 10,000 landless/marginal women and their families



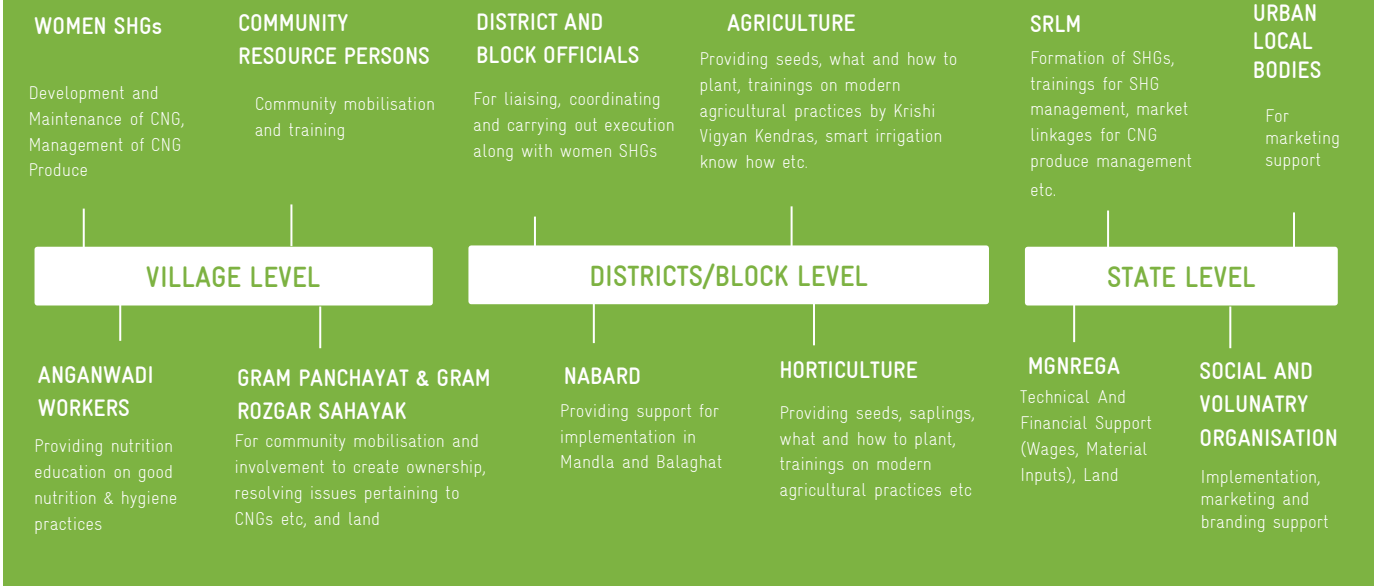
KEY FEATURES

- Maintenance by Self-Help Groups (SHGs) of 10-20 women under State Rural Livelihood Mission (SRLM) on community land of at least 1-hectare size, Anganwadi Centre or school premises
- Wages to SHGs under MGNREGA for maintenance of gardens
- SHGs receive material inputs such as seeds, saplings, support for irrigation and fencing under MGNREGA and schemes from other line departments
- Promotion of agroecological practices
- Community mobilisation with involvement of men and active participation of Gram Panchayats to strengthen local governance
- Marketing and Branding of CNG produce

SENU STRATEGY OF CNG UPSCALING IN MADHYA PRADESH

- Upscale the pilot to 350 gardens in four project districts (Sheopur, Chhatarpur, Barwani, Khandwa) from 2021 to 2024 in collaboration with GIZ Water Security and Climate Adaptation in Rural India (WASCA) project and an implementation partner. The initiative will be linked with nutrition-sensitive micro planning and [nutrition education](#) facilitated by Anganwadi workers, with recipe demonstrations on site, etc.
- Support GIZ projects Soil Protection and Rehabilitation for Food Security (ProSoil) and Climate Adaptation and Finance in Rural India (CAFRI) to implement CNGs in Mandla & Balaghat districts
- Technical support to MGNREGA for capacity building of officials and other stakeholders at state and district level to set up at least 3 CNGs per block

INVOLVED & REQUIRED STAKEHOLDERS FROM STATE TO VILLAGE LEVEL



LESSONS LEARNT



Need for climate-friendly irrigation techniques



Adequate (natural) fencing to protect the gardens from stray animals



Early and constant involvement of community especially men and governmental stakeholders



Timely access to seeds and wages through governmental schemes

PILOT OF 20 COMMUNITY NUTRITION GARDENS (2019 - 2021)



Community Watch our video for details



Community mobilisation



creation of irrigation facilities



identification & development including planting of fruit trees



institutionalization with Gram Panchayats



nutrition and hygiene practices



intercropping with vegetables



awareness and training on good agricultural



starting community seed banks

ACHIEVEMENTS



Gardens reduced the need for families to migrate for work



Women self-reported including at least 3 food groups in meals they prepare



Increased and active participation of women in village meetings

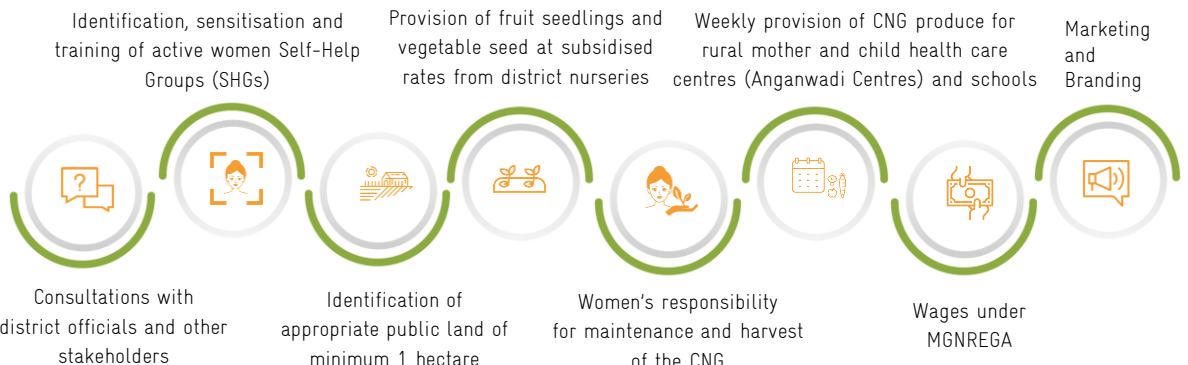


Increased financial literacy, nutritional knowledge & alternate source of income led to economic empowerment for women



Gardens supported 500+ families in both project districts by supplying surplus produce of vegetables during the Covid-19 lockdown

STEPS OF IMPLEMENTATION



Published by:

Deutsche Gesellschaft für Internationale Zusammenarbeit (GIZ) GmbH
Registered offices: Bonn and Eschborn
Securing Nutrition, Enhancing Resilience (SENU) Project
Safdarjung Enclave, A-2/18,
New Delhi - 110029

T: +91 11 4949 5353
F: +91 11 4949 5391
www.giz.de/india
Project Director:
Ms Susanne Milcher
(susanne.milcher@giz.de)

Photos: © GIZ / SENU

GIZ is responsible for the content of this publication

March 2022



Scan the QR code for detailed report